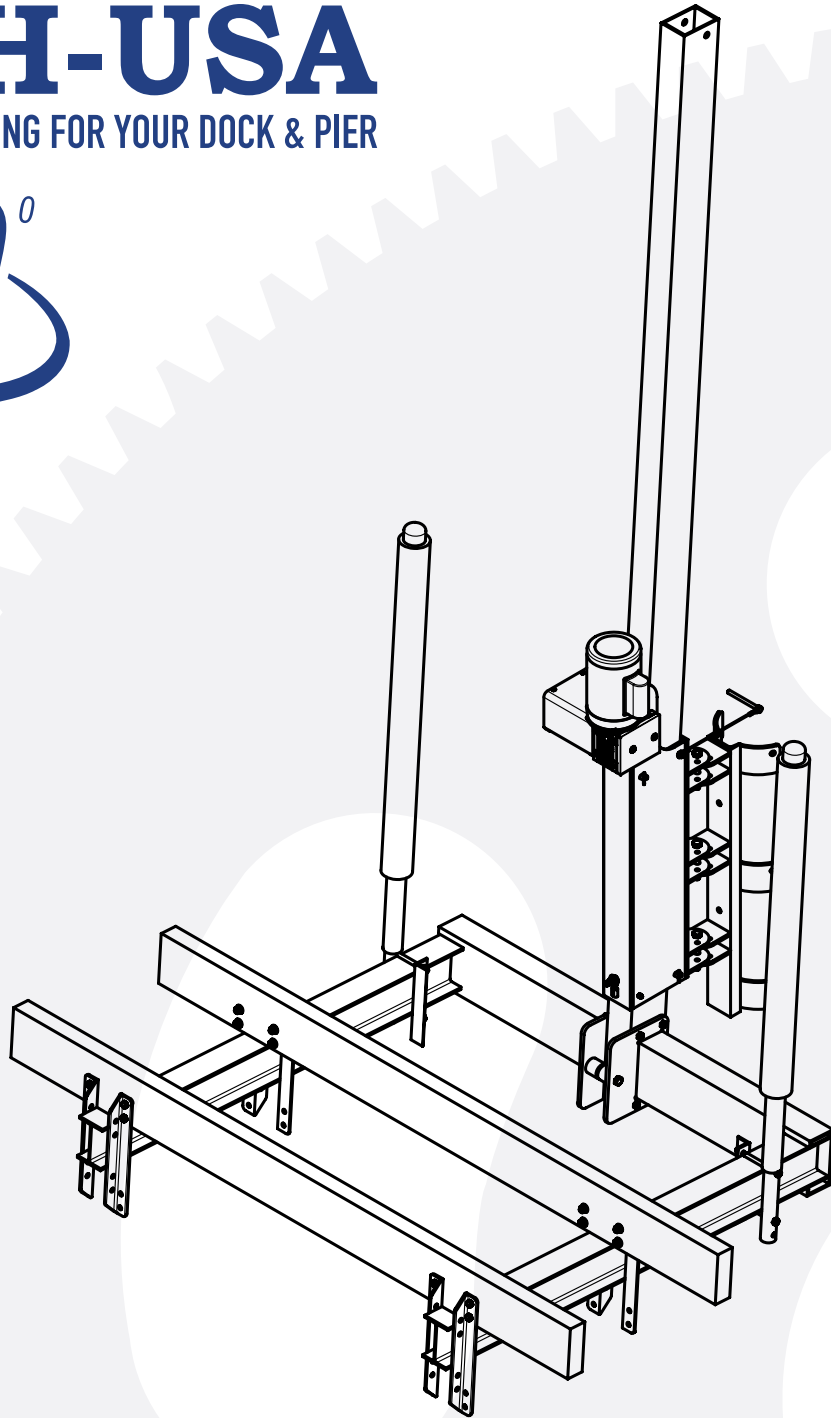




BH-USA

EVERYTHING FOR YOUR DOCK & PIER



COASTAL SERIES DIRECT DRIVE PWC SKIFF LIFT

1500 LB SKIFF LIFT

INSTALLATION & USAGE MANUAL

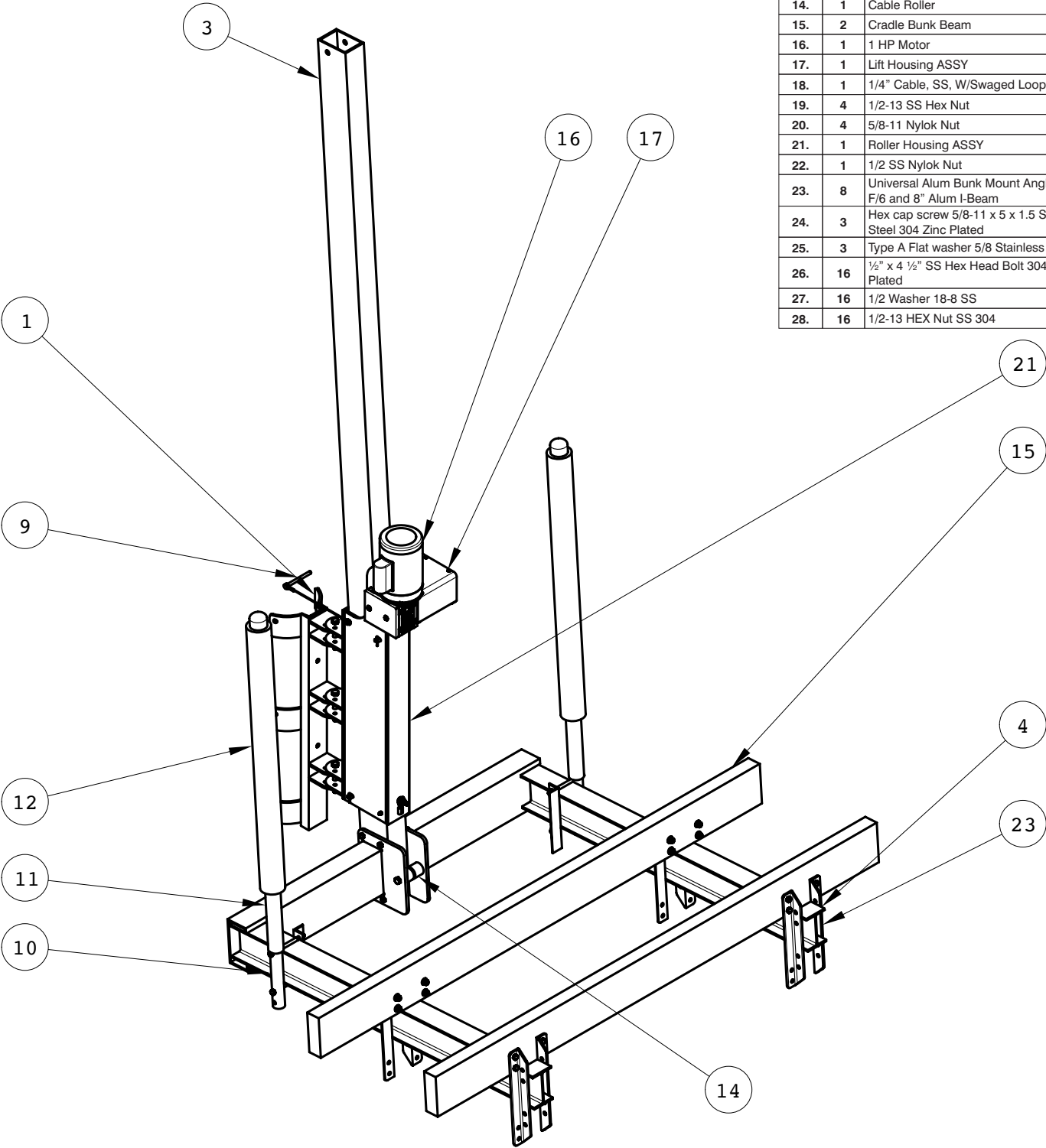
8/2022



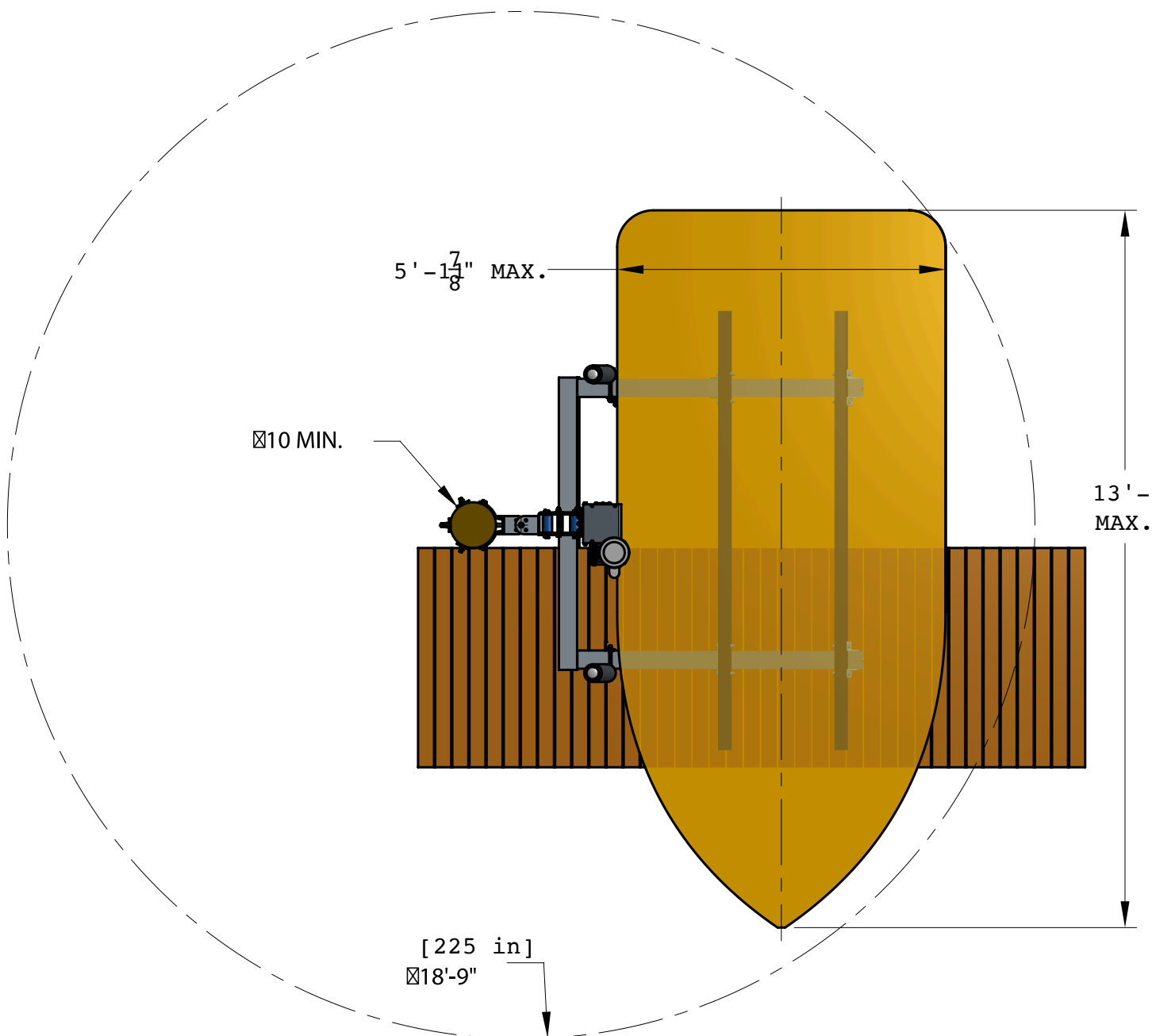
1500 LB. COASTAL SERIES SKIFF PILING MOUNT PART BREAKDOWN

Note: Requires 20 AMP Service
*Do Not Operate with Extension Cord

Item No.	QTY	Description
1.	1	Piling Mounts
2.	5	.812 ID x 1.469 OD x .125 THK Lubricant Filled Nylon Washer
3.	1	Mast
4.	2	Lift Arm
5.	1	1/2-13 x 2 LG SS Hex Bolt
6.	7	1/2 SS Washer
7.	4	1/2-13x6 LG SS Hex Bolt
8.	4	1/2 Washer Lock SS
9.	1	Swing Stop Pin ASSY
10.	2	Alum Guide Post Stanchions
11.	2	Guide Post
12.	2	Guide Post Bumper
13.	1	5/8 -11 x 6 LG Hex Bolt SS
14.	1	Cable Roller
15.	2	Cradle Bunk Beam
16.	1	1 HP Motor
17.	1	Lift Housing ASSY
18.	1	1/4" Cable, SS, W/Swaged Loop
19.	4	1/2-13 SS Hex Nut
20.	4	5/8-11 Nylok Nut
21.	1	Roller Housing ASSY
22.	1	1/2 SS Nylok Nut
23.	8	Universal Alum Bunk Mount Angle Bracket F/6 and 8" Alum I-Beam
24.	3	Hex cap screw 5/8-11 x 5 x 1.5 Stainless Steel 304 Zinc Plated
25.	3	Type A Flat washer 5/8 Stainless Steel
26.	16	1/2" x 4 1/2" SS Hex Head Bolt 304 Zinc Plated
27.	16	1/2 Washer 18-8 SS
28.	16	1/2-13 HEX Nut SS 304



Must use a min 10" pilling



When Choosing location for your lift, make sure the location has adequate clearance to rotate your watercraft. Refer to the illustration for the minimum clearance requirements for your personal watercraft.



STEP 1: PILING MOUNT INSTALLATION

Install Rollers, Side Bearing Pads, and all hardware components in the roller housing before inserting the Mast. In most cases these come pre installed from the factory

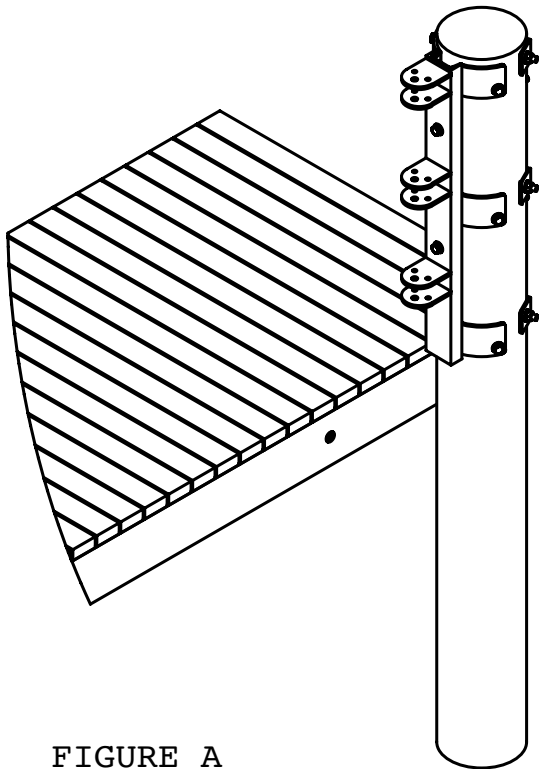
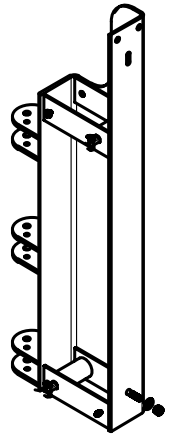
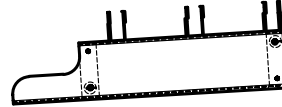
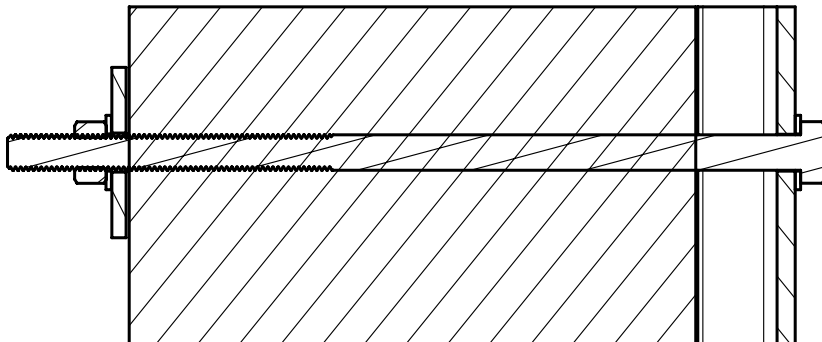


FIGURE A

1. The first step in installing your lift is attaching the piling mount to the piling. you will need a 5/8" drill bit, 5 bolts (5/8" diameter and 2" min. Longer than your piling diameter), 2 bolts (min. of 4" longer than your piling diameter) and wrenches to fit the 5/8" bolts.
2. Your piling height should be a min. of 43" from the decking surface. (as shown in figure C)
3. The piling mount bracket has one end with the channel extending below the hinge should be 12" from the decking or surface that the lift will be rotating over. (as shown in figure A)
4. Place the piling mount against the piling, use a level to get the piling mount square and plumb on the piling. (as shown in figure A) after you achieve this, mark the 2 holes in the front of the channel for drilling. "Do not mark the six holes in the ears yet"
5. Remove the piling mount and drill the holes as straight as possible with a 5/8" diameter drill bit.
6. Then attach the piling with (2) 5/8" bolts, square and plumb piling mount into place. (2x4 shims may be needed to accomplish this.)
7. After attaching piling with (2) 5/8" bolts, square and plumb piling mount into place. (2x4 shims may be needed to accomplish this.)
8. After achieving step 7, mark the six remaining holes in the piling ears and drill with 5/8" diameter drill.



SECTION B - B

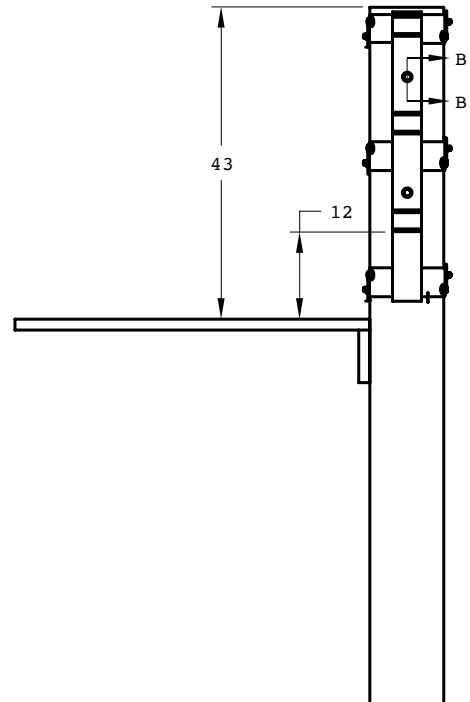
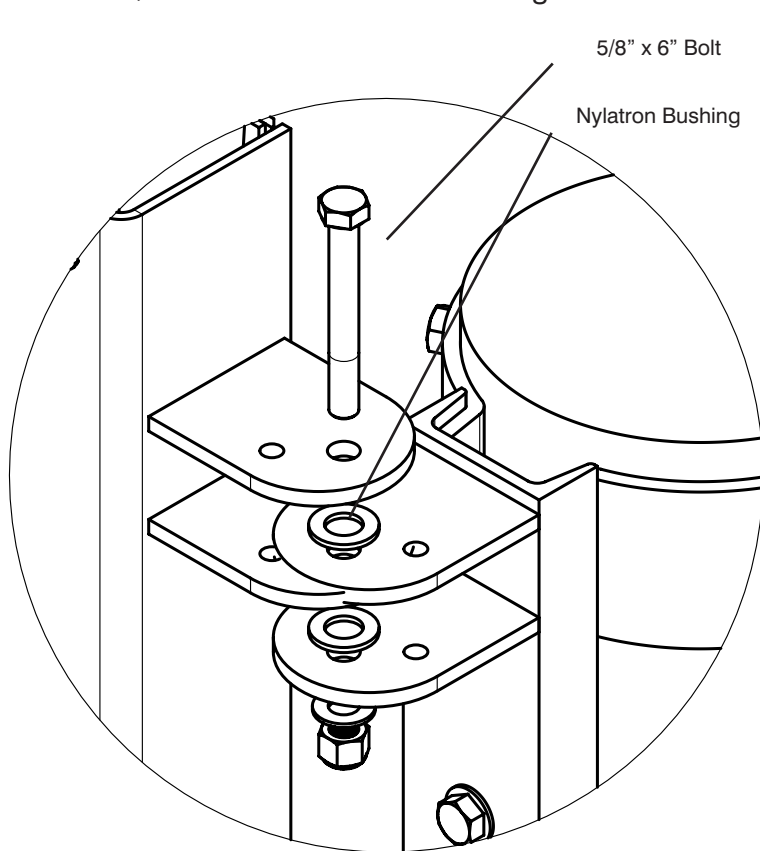


FIGURE C

STEP 3: MAST INSTALLATION

1. Position housing close to piling mount bracket, attached to piling.
2. Stand housing and mast assembly upright. (as shown in figure B)
3. Align brackets on the housing above brackets on the piling mount. (As shown in figure A)
4. Separate piling mount swivel hinges from housing swivel hinges using supplied nylatron bushing. (As shown in figure A)
5. Insert 5/8" x 6" bolts to secure housing and mast assembly to piling mount bracket. (As shown in figure A)



DETAIL B

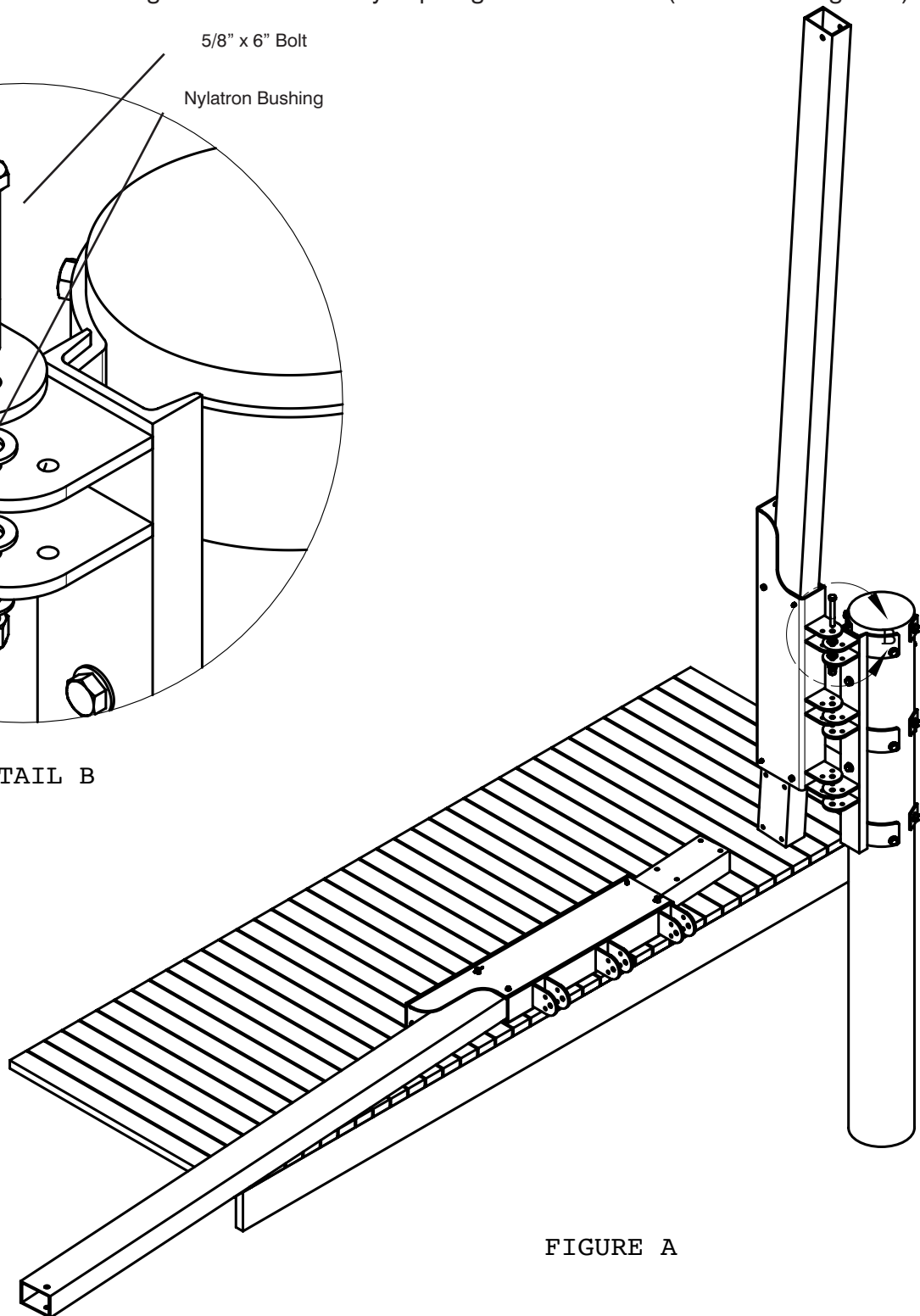


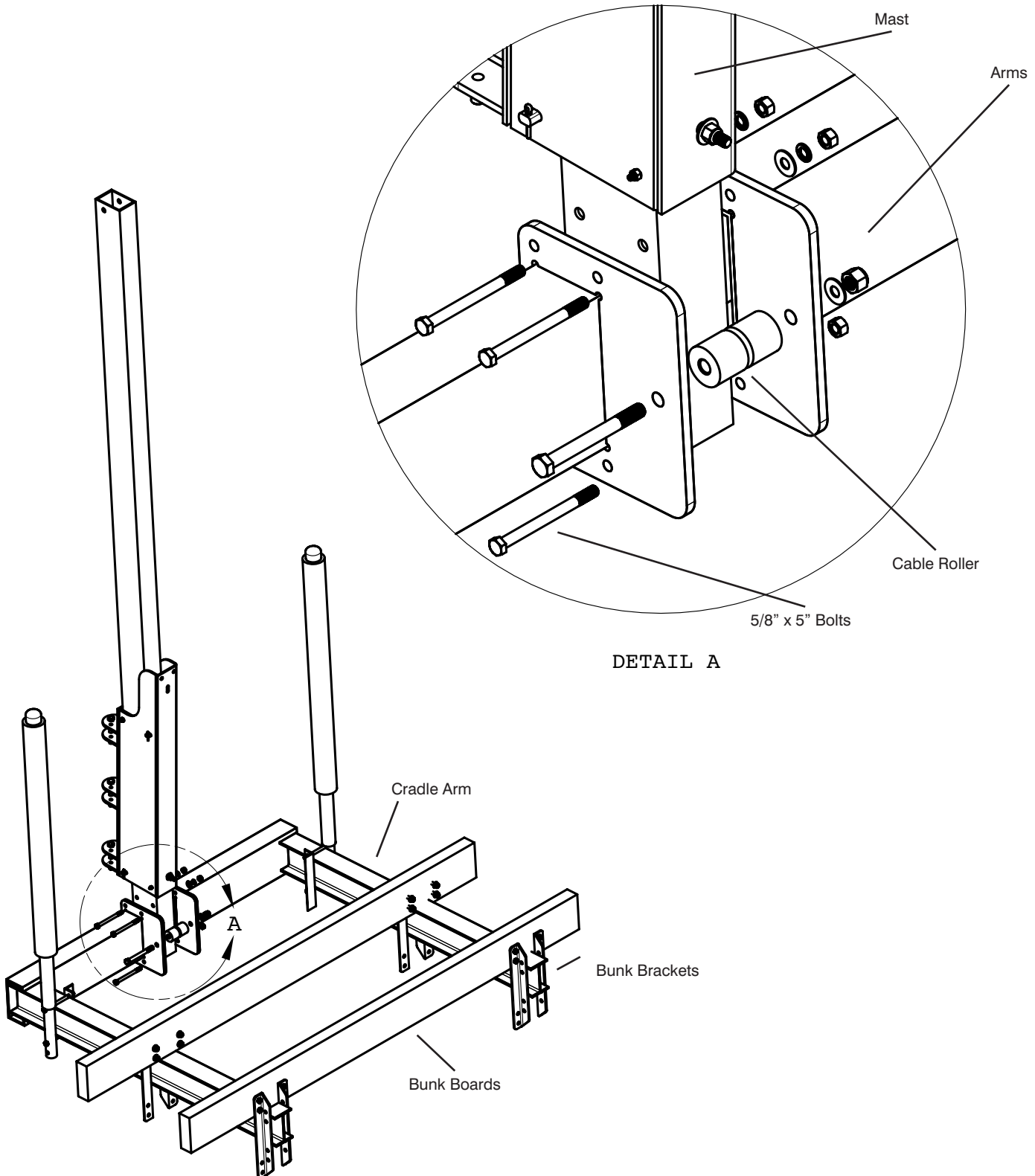
FIGURE A

Note: 5/8" x 4 1/2" Bolt and nylatron bushing are located in piling channel.



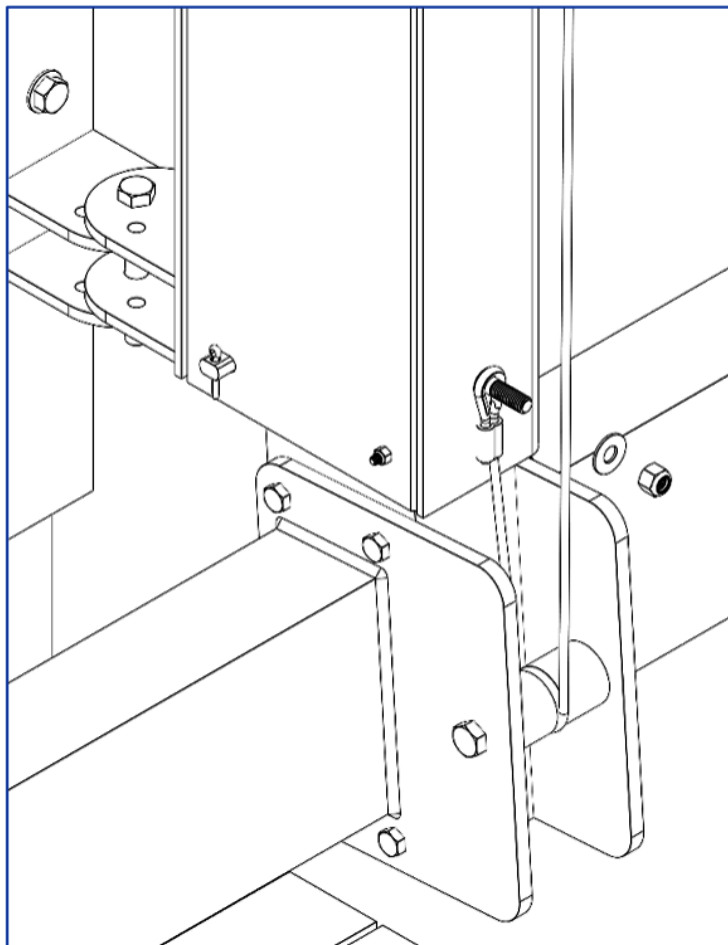
STEP 4: ARM & BUNK ASSEMBLY

1. Attach arms to mast using (4) 1/2" x 5" bolts, lock washer, and nut.
2. Attach cable to arm plate using (1) 5/8" x 5 bolt and spacer. (As shown in figure B)
3. Attach bunk boards to arms using (4) u-bolts and bunk board brackets.
4. Locate bunk boards so that you have 5" (minimum) clearance between your vessel and the mast. This clearance is needed to ensure that your vessel does not come in contact with the cable as it is lifted vertically.

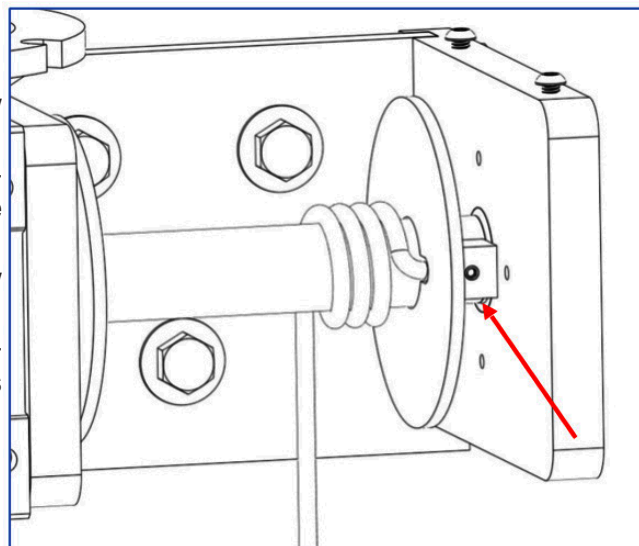


STEP 5: HOIST & CABLE ASSEMBLY

1. Attach the $\frac{1}{4}$ " cable swaged loop to the bottom center of the Lift Housing with the $\frac{1}{2}$ " bolt, fender washer, and locking nut.
2. Loop the loose end of the cable under the Cable Roller located between the Lift Arms.



3. After cable is inserted past the set screw, tighten set screw onto cable (pull slightly on cable to ensure cable is secure)
4. Wind cable onto the spool by keeping tension on the cable and running drive in the upward motion. (Be sure cable is wrapped neatly on the cable spool.)
5. After cable is inserted past the set screw, tighten set screw onto cable (pull slightly on cable to ensure cable is secure)
6. Wind cable onto the spool by keeping tension on the cable and running drive in the upward motion. (be sure cable is wrapped neatly on the cable spool.)



Date

Inspected by

Notes

This image shows a single sheet of white paper with horizontal ruling lines. The lines are evenly spaced and run across the width of the page. There are no margins, text, or other markings on the paper.

ACCESS MORE INFORMATION
AND ORDER ONLINE AT BH-USA.COM

WAYS TO SHOP!



Shop By Catalog
Request Yours
Online or by Phone



Call **800.259.8715**
to Order or Request
A **FREE** Catalog



Shop Our Site
WWW.BH-USA.COM

STAY CONNECTED!



CONTACT US!

 800-259-8715

Monday - Friday
8 AM TO 5 PM CST

STAY CONNECTED!



FOR MARINA OR YACHT CLUB FILE

SLIP # _____

MEMBER # _____

MEMBER NAME _____

SIGNATURE _____

DATE _____

BY SIGNING THE ABOVE I AGREE THAT I HAVE BEEN TRAINED IN LIFT USAGE AND HAVE READ AND UNDERSTAND THIS GUIDE.